



PARISH PARTNERSHIP PANEL

Thursday 6 September 2012

Response to Kent Association of Local Councils

Prior to the meeting of the Parish Partnership Panel, but after publication of the agenda, several areas of interest were raised by the Kent Association of Local Councils. The responses to these enquiries made by Officers from Tonbridge and Malling Borough Council are set out below. It was noted that no answers were required from Kent Police or Kent County Council.

1. Planning

- (1) Members of the Kent Association of Local Councils (KALC) were strongly opposed to the proposed loss of hardcopy planning documents for Parish Consultation.

When Parish and Town Councils were contacted about the electronic issue of Lists B (planning applications received) and D (planning decisions issued) we also said that we were considering moving to electronic consultation and transmission of application documents.

We have had conversations with several PCs and we can reassure all Parish and Town Councils that we will honour the provision of hard copies unless and until suitable facilities are available for those Councils to display applications at their offices and/or public meetings. Even so there will always be circumstances where a hard copy is the easiest way of dealing with a particular application.

- (2) KALC asked whether all consultee and neighbour responses on the Tonbridge and Malling Planning website be indexed by name. For example, Platt Parish Council, Mr Smith.

There are 2 levels of 'naming'. The first is generic e.g. *drawing, report, application form* and this is derived from a pre-defined list. The second *self-creates* a list of document types often used such that all Documents of a type are listed together, so for example all drawings will appear together.

We are investigating the possibility of indexing neighbour responses by the name of the author but, in the light of past experience, anticipate that there may be practical, data protection and other legal issues that will prevent us from doing so.

- (3) On major applications, could the documents directory be broken down into sections. For example, consultee responses, material planning documents and aesthetics such as house elevations and plans, street

scenes and artists impressions?

This is an attractive idea and something we have already raised with our software suppliers but it will need a significant level of software re-writing. Unless a significant number of Councils promote its development alongside this Council then cost will be likely to be prohibitive. This is a matter that we will keep under review.

2. Parish Partnership Panel

- (1) KALC asked if it could be formally agreed that all agenda items apart from Kent Police and Kent County Council questions be given a deadline of 5 days prior to the meeting?

Local authorities have a statutory and legal obligation to publish agendas five clearing working days before the date of the meeting.

In the past comments have been received that agendas have been too long and "not well balanced". If agenda items were only submitted on the statutory deadlines for publications, there would not be the opportunity to address these issues. Therefore, to ensure that agenda papers meet the statutory obligation the Borough Council need to receive items at least six clear working days prior to the meeting to enable the appropriate administration and organisation to be undertaken.

It is of course understood that some items may arise closer to the meeting and subject to these being notified to us prior to the statutory publication dates, we would try to accommodate these on the agenda.

- (2) Regarding Parish Partnership Panel discussions on the Standards Committee, how many parish councils have signed up to the Tonbridge and Malling System?

The Chief Solicitor advised that all parish councils had been written to on 1 August 2012 asking if they were agreeable to the creation of a joint committee. The deadline for responses was no later than 28 September 2012 and it was reported that no responses had been received to date.

- (3) Has Counsel's opinion yet been delivered regarding parish council Chairmanship on Parish Council Standards Hearing Committees?

The Chief Solicitor advised that this was not an issue upon which the Borough Council needed to seek Counsel's opinion. The Chairmanship of the Hearing Panels was a matter for the Joint Standards Committee to determine.

3. Air Quality Management Assessment (AQMA)s

The Kent Association of Local Councils asked to be updated on the timescales and progress of the following:

(1) Mitigation measures on existing AQMAs

Tonbridge and Malling Borough Council have produced a draft Air Quality Action Plan (AQAP) for their existing AQMAs in conjunction with Kent Highways Authority, the Highways Agency and other Council departments, which is currently being revised. The AQAP sets out measures which the Council would seek to introduce to work towards improving the air quality within the AQMA.

These measures include:

- Investigating bus priority measures;
- Re-assessing junction layout and priorities;
- Sequencing of traffic lights;
- Improving traffic flow;
- Encourage residents to leave their car at home and use public transport or cycle; and
- Requiring conditions on new developments in an AQMA.

Whilst the TMBC has a responsibility to monitor the air quality in its area, the Council has no legislative power to enforce changes that could improve the air quality where the source of the poor air quality is transport related. In common with the vast majority of AQMA's throughout the UK all TMBC's AQMAs have been declared for transport related pollution

(2) AQMAs currently undergoing the declaration process

Tonbridge and Malling Borough Council are formally proceeding to declare an AQMA for an area in Borough Green based on the A25, Western Road and High Street triangle.

(3) Identification of other areas that would need consideration as AQMAs

TMBC have completed all the reports required by the Department of the Environment and Rural Affairs Local Air Quality Management (LAQM) regime, in which areas of potential concern are initially identified.

The latest report - 2012 Updating and Screening Assessment (USA)- has been completed and submitted to DEFRA for their approval. Once the Council receive notification that the report has been approved, it will be available on the Council's website. All previous LAQM reports are available on the Council's website:

<http://www.tmbc.gov.uk/services/environment-and-planning/pollution/pollution-control-air-quality>

The draft report has identified that further investigation is required at the northern and southern ends of Tonbridge High Street.

We look forward to welcoming you to the next meeting of the Parish Partnership Panel, scheduled for Thursday 29 November.

Allison Parris
Democratic Services Officer
Tonbridge and Malling Borough Council
(01732 876023)
allison.parris@tmbc.gov.uk

Patient Participation

West Kent CCG Health Network

Natasha Wright

Patient Experience & Engagement Manager

Significant changes in NHS

- Closure of Primary Care Trusts, as the lead commissioning organisations of health services.
- Introduction of Clinical Commissioning Groups (CCGs).
- CCGs - clinically-led organisations, made up of local GP practices who will all have a say in what healthcare services are commissioned within their locality.

CCGs need to be able to show how they will ensure inclusion of patients, carers, public, communities of interest and geography, health and wellbeing boards and local authorities.

CCGs need to promote shared decision-making with patients, about their care.

Developing clinical commissioning groups: towards authorisation, DH, September 2011.

CCG Health Networks

- West Kent launched its **Health Network** in 2007 – 811 Members (this includes representatives from vol orgs so effectively larger membership)
- From April this year recruiting/transferring to **CCG Health Networks** – DGS and West Kent
- West Kent – 152
- DGS – 85
- Recruitment through PPG events, current Health Network and promoting at existing forums.

Benefits of being part of the CCG Health Network

- Receiving the HealthNetwork Newsletter
- Being invited to attend events and meetings
- Receiving updates about the changes with regards to the new CCGs
- Having an opportunity to share views on local health care services.

WEST KENT CCG HEALTHNETWORK

Join Now! Make a Difference!

As you know, the NHS is changing. One of the key changes is that more decisions about health services will be made locally. In our area we need local people to join our listening group called 'Health Network' so we hear from you about your experiences of services and what you think our priorities should be.

Benefits of joining the Health Network:

- Take part in discussions about health issues that interest you
- Share your personal experiences
- Tell us what's important to you, to help set priorities
- Receive a regular newsletter about what is going on in your area

If you want to be part of the West Kent Health Network then join today!

You choose how and when you participate, and choose from a range of activities to match your interests and lifestyle. Everyone is eligible to join!

Simply complete the form below and return it to:
Natasha Wright, FREEPOST RRJX JYUR UYAC, NHS Kent and Medway, Wharf House, Medway Wharf Road, Tonbridge, Kent, TN11 1RE or scan and e-mail to natasha.wright@wksccg.nhs.uk

Thank you

Title: _____ Name: _____ Postcode: _____
Address: _____ Telephone: _____ Mobile: _____
Email: _____ GP Practice: _____

Age: 15-24 25-34 35-44 45-64 65-74 75+

General areas of interest: Long term conditions Maternal health Mental health Other

Specific areas of interest: Cancers & tumours Dental Endocrine Genito-Urinary System Infectious diseases Circulatory Musculo-Skeletal Neurological Respiratory Trauma & injuries Other _____

Are you a member of the PCT's HealthNetwork? Yes/No

CCG Health Networks - Newsletter

HEALTHNETWORK 

The people's voice for healthcare

Patient & Public Newsletter

May 2012

Dartford, Gravesham and Swanley Clinical Commissioning Group

Invite you to an event on

Thursday 21st June
10:00am - 3:00pm
(Including lunch)

Princes Park Stadium, Grassbanks, Dartford, Kent DA1 1RT

This event is designed for patients, public and local providers to hear about the CCG, what it does and what its plans are for 2013 / 14.


Book your place now!

Attendance is by reservation only, so please promptly reserve your place by contacting Charlotte Smitherman on (1732 37526) or email Charlotte.Smitherman@wkpct.nhs.uk

For more information on the DSG CCG please see overleaf

In this issue

Introducing DGS CCG	Pg 2	Jubilee bank holiday - Are you prepared?	Pg 6
Patient Participation in GP Practices	Pg 3	Call for A&E Survey Participants	Pg 7
Gathering patient experience through Patient Participation Groups	Pg 4	Diabetes Awareness Week	Pg 7
Stepping up	Pg 5		

HEALTHNETWORK 

The people's voice for healthcare

Patient & Public Newsletter

July 2012

NHS West Kent Clinical Commissioning Group

Invite you to an event on

Tuesday 31st July
9:30am - 3:00pm
(Including lunch)

River Centre, Medway Wharf Road, Tonbridge TN9 1RE

This event is designed for patients, public and local providers to hear about the CCG, what it does and what its plans are for 2013 / 14.

Book your place now!

Attendance is by reservation only, so please promptly reserve your place by contacting Charlotte Smitherman on (1732 37526) or email Charlotte.Smitherman@wkpct.nhs.uk

For more information on the West Kent CCG please see overleaf

In this issue

Introducing NHS West Kent CCG	Pg 2	New Campaign aims to make England the most active host Nation ever	Pg 8
Patient Participation in GP Practices in DGS	Pg 2	Community Futures Kent	Pg 9
Integration between DGS & Medway Foundation Trust	Pg 4	Forthcoming Promotional Events	Pg 10
Unsung heroes of Individual Funding Request panel	Pg 6	Health Network - Join us on our Journey	Pg 10

HEALTHNETWORK 

The people's voice for healthcare

Patient & public newsletter

September 2012

Help shape the future.....

A date for your diary – the next West Kent CCG Public Event

A follow up event is being planned for 9th October, to give an update on the CCG, how it's developing and its future plans.

To register your interest in this event please email Natasha – natasha.wright@wkpct.nhs.uk or telephone on 01732 375269 ext 5415

West Kent CCG HealthNetwork

If you would like regular updates and would like to get involved or give feedback as the CCG develops, then join West Kent CCG's Health Network – see the final page of the newsletter. And if you live/work in West Kent, join us at our follow up meeting on Tuesday 9 October.



In this issue

Shaping the future - page 2	Clinical research - page 6
Acute Trauma - page 3	Healthy Club - page 7
Diabetes information - page 4	We can help - page 8
Get involved - page 5	Events - page 9

Patient Participation - Overview

- PPG events
 - West Kent PPG event – 27th April
 - DGS PPG event - 30th May
- PPG Chair event – West Kent – 18th July
- CCG Launch Events – DGS – 17th July
 - West Kent – 31st July
- Forthcoming event – West Kent CCG Public Event 9th October

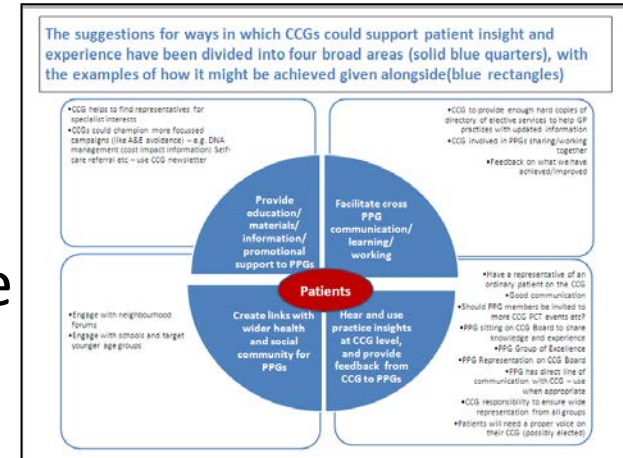


PPG Events

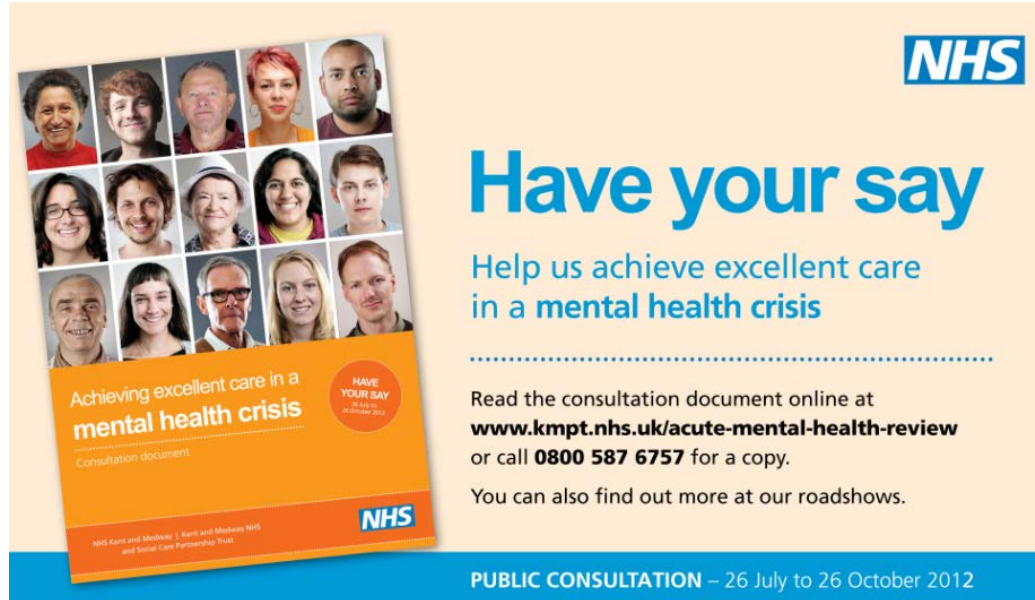
- Patients, members of the public and GP practice staff came together to share ideas and build on best practice in patient participation.
- Working groups were asked to consider how Patient Participation Groups and the CCG could:
- Support the gathering of 'Patient insight and experience' and
- Support 'Patient self-care'.

PPG Events – Over-arching issues

- Embrace modern technology – use of websites, text messaging, skype etc
- Funding/practical support for PPGs
- Have specialist focus groups
- Having the full support of GPs within the practices, “of all our hard to reach communities, they are the hardest”
- Securing investment/ funding/ practical support, e.g. admin help for the PPG



Example of how to get involved: Achieving excellent care in a mental health crisis



The image shows a promotional poster for a public consultation. On the left is a graphic of a consultation document cover featuring a grid of 15 diverse people's faces. The text on the cover includes 'Achieving excellent care in a mental health crisis', 'Consultation document', and the NHS logo. To the right of the graphic, the NHS logo is at the top right. Below it, the main heading 'Have your say' is in large blue font. Underneath, it says 'Help us achieve excellent care in a mental health crisis'. A dotted line separates this from the contact information: 'Read the consultation document online at www.kmpt.nhs.uk/acute-mental-health-review or call 0800 587 6757 for a copy. You can also find out more at our roadshows.' At the bottom of the poster, a blue bar contains the text 'PUBLIC CONSULTATION – 26 July to 26 October 2012'.

- NHS Kent and Medway and Kent and Medway NHS and Social Care Partnership Trust are undertaking a joint consultation from July 26 – October 26 2012.
- Not everyone in Kent and Medway has access to an equally good hospital service.

Achieving excellent care in a mental health crisis

- NHS proposals aim to improve patient's experience of mental health crisis care by:
- Strengthening community based crisis resolution and home treatment teams
- Developing three centres of excellence for people in a mental health crisis
- Expanding the psychiatric intensive care outreach service county-wide
- Concentrate stays for psychiatric intensive care in one purpose-built hospital unit



Have your say
Help us achieve excellent care in a mental health crisis

Read the consultation document online at
www.kmpt.nhs.uk/acute-mental-health-review
or call **0800 587 6757** for a copy.

You can also find out more at our roadshows:

Maldstone	Swanley	Ashford
18 September, 2pm to 5pm Maldstone Community Centre, Marshall Street, Maldstone, Kent, ME14 1JH	28 September, 1pm to 4pm Swanley Banqueting, Alexandra Suite, St Mary's Road, Swanley, Kent, BR8 7BU	4 October, 10am to 1pm Norman House, Beaver Business Park, Beaver Road, Ashford, Kent, TN23 2JF

PUBLIC CONSULTATION
28 July to 28 October 2012

NHS Kent and Medway | Kent and Medway NHS and Social Care Partnership Trust **NHS**

Achieving excellent care in a mental health crisis – Get Involved!

- All documents can be viewed via the following link <http://www.kmpt.nhs.uk/acute-mental-health-review>
- To give everyone a chance to discuss our plans and answer any questions we will be holding events on:

4 September – Corn Exchange, Rochester, ME1 1LX
2.00pm – 5.00pm

18 September – Maidstone Community Centre, Maidstone,
ME14 1HH 2.00pm – 5.00pm

28 September – Swanley Banqueting , Swanley, BR8 7BU
1.00pm – 4.00pm

2 October – The King Charles Hotel, Gillingham, ME7 5QT
6.00pm – 9.00pm

4 October – Norman House, Ashford, TN23 7SH
10.00am – 1.00pm



Have your say
Help us achieve excellent care in a mental health crisis

Read the consultation document online at www.kmpt.nhs.uk/acute-mental-health-review or call 0800 587 6757 for a copy.

You can also find out more at our roadshows:

Maidstone	Swanley	Ashford
18 September, 2pm to 5pm Maidstone Community Centre, Marsham Street, Maidstone, Kent, ME14 1HH	28 September, 1pm to 4pm Swanley Banqueting, Alexandra Suite, St Mary's Road, Swanley, Kent, BR8 7BU	4 October, 10am to 1pm Norman House, Beaver Business Park, Beaver Road, Ashford, Kent, TN23 7SH

NHS Kent and Medway | Kent and Medway NHS and Social Care Partnership Trust



Achieving excellent care in a mental health crisis – How you can help

- Please raise awareness!
- Display our ‘Have your say’ screen saver at your organisation
- Display our posters – copies available today
- Attend an event
- Advertise our events in your newsletters, websites etc



Have your say

Help us achieve excellent care in a mental health crisis

Read the consultation document online at www.kmpt.nhs.uk/acute-mental-health-review or call **0800 587 6757** for a copy.

You can also find out more at our roadshows:

Maidstone	Swanley	Ashford
18 September, 2pm to 5pm Maidstone Community Centre, Marsham Street, Maidstone, Kent, ME14 1HH	28 September, 1pm to 4pm Swanley Banqueting, Alexandra Suite, St Mary's Road, Swanley, Kent, BR8 7BU	4 October, 10am to 1pm Norman House, Beaver Business Park, Beaver Road, Ashford, Kent, TN23 7SH

NHS Kent and Medway | Kent and Medway NHS and Social Care Partnership Trust



PUBLIC CONSULTATION
26 July to 26 October 2012

For further information
please do not hesitate to contact me

Natasha Wright

natasha.wright@wkpct.nhs.uk

01732 375200 ext 5415

Changes to Council Tax Benefit from April 2013

Parish Partnership Panel

6 September 2012

Sharon Shelton, Director of Finance

Paul Griffin, Revenue & Benefits Manager



Outline of Session

Paul Griffin

- Council Tax & Council Tax Benefit
- Council Tax Support
- What it means for claimants
- The Consultation

Sharon Shelton

- What the new scheme means for Parishes

Paul Griffin
Revenue & Benefits
Manager

Council Tax

- Almost 50,000 properties billed in Borough
- Gross debit £79,661,926
- Single Person Discount (25%) unchanged
- High collection rates

Council Tax Benefit

- Means tested - Income assessed against 'applicable amount'
- Up to 100% benefit – i.e. no council tax to pay
- Credited directly to individual council tax accounts
- Benefit awarded is 100% reimbursed by central Government

Council tax benefit

- Currently 7,500 households receive council tax benefit
- Approximately half are pensioners
- Over half of working-age council tax benefit claimants receive full benefit, i.e. no council tax to pay
- We currently pay out £7.3m p.a.
- Average weekly payment for non-pensioners is £18.83

Council Tax Reduction Scheme

- April 2013 – council tax benefit abolished to be replaced with local “reduction schemes”
- Council must publish a draft scheme and consult on it
- Local schemes must be adopted by councils by 31 January 2013 otherwise face the default scheme
- Funding from Government cut by 10%

Council Tax Reduction Scheme

- Pensioners fully protected - cannot receive less
- Local scheme must:
 - Have regard to vulnerable groups, e.g. the disabled & families with children
 - Provide encouragement to work
 - Counter the risk of homelessness

Council Tax Reduction Scheme

The Impact

- Financial loss likely to be in the region of £800,000 +
- Burden falls on KCC 71%; Borough Council 12%; Police 9%; Fire & Rescue 5%; Parishes 3%
(but see later)
- Kent-wide, shortfall of £8m to KCC
- Not an option to continue with rules of current scheme

Council Tax Reduction Scheme

- Agreed Kent wide common platform
- No increase on council tax, no cuts to services and no increased charges to fund the gap
- No funding from reserves
- The 10% reduction equates to 18.5% less benefit for working-age claimants across Kent
- Rules for claiming to remain the same
- Proposed reduction from 6 to 3 months for period of no charge for empty properties

The Consultation



- We are required to consult on our draft scheme
- Who are we consulting?
- What are we consulting about?
- How are we consulting?
- When is it all happening?

The Consultation



We are consulting:

- All current benefit claimants except pensioners
- A selection of council tax payers not claiming benefit
- All owners of empty domestic properties and second homes

The Consultation



We are also consulting, among others:

- Local organisations, e.g. CABx; debt advice agencies; social landlords
- County councillors
- Our local MPs
- Yourself! – see letter and information pack sent to your clerks

The Consultation



- Also an opportunity for anyone to comment via our website
- Consultation runs until 5 October
- Poor response so far – reminders 12 Sep
- Please encourage responses
- After 5 October, we will analyse the responses
- Final decision about design of scheme on 21 November

Sharon Shelton

Director of Finance

Effect on Parishes

- Currently the amount of council tax benefit has no effect on the tax bases for parishes
- Parishes notify us of their precept for the year, which is added to the council tax bill
- A person's council tax benefit is then shown as a credit on their council tax bill
- However, the position will change from April 2013

Effect on Parishes

- From April 2013, the amount of council tax support will be shown as a discount on the council tax bill – in the same way as a single person discount is shown
- For example, a pensioner household entitled to 100% benefit will get a 100% discount

Effect on Parishes

- Anticipated effect on parishes **as at end of August**
- Each parish's tax base reduced to reflect the discounts given for council tax support
- The Borough would pass over to each parish its share of reduced grant it received from central Government
- Parish would have to make up the 'missing' 10%

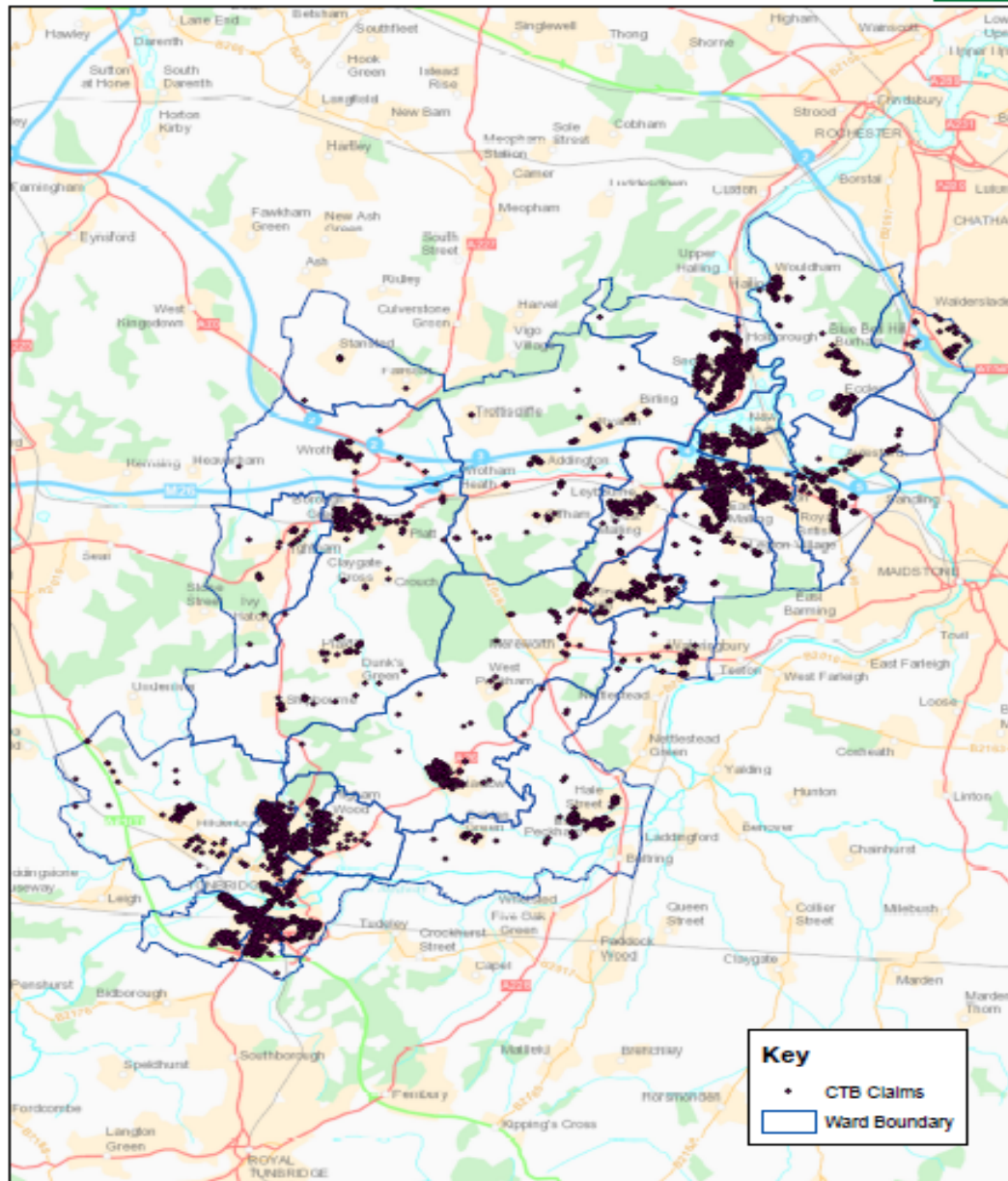
Effect on Parishes

- Parishes would be affected differently
- Some parishes have more benefit claimants than others
- Have to take account of number of pensioners and non-pensioners
- The following shows distribution of claims by ward and, as an illustration, the distribution of benefit households in a few parishes

COUNCIL TAX BENEFITS CLAIMS FROM UPRNS SHOWING WARDS



Scale 1:92,293
Map dated 04/09/2012



Effect on Parishes

Parish	Total Households	Benefit households (Pensioner) & as % of total households	Benefit households (Working-age) & as % of total households & as % of all benefit households	Average benefit (working - age) £	Benefit households as % of all households
Ightham	798	24 / 3.0	10 / 1.3 / 29.4	£19.02	4.3
Ditton	1968	155 / 7.9	133 / 6.7 / 46.2	£20.23	14.6
Snodland	4495	365 / 8.1	585 / 13.0 / 61.6	£18.31	21.1

Effect on Parishes

- Parishes concerned over uncertainty of funding
- Districts not obliged to pass funding to them (although TMBC always intended to)
- Government recognised concerns and consultation paper issued at end of August.
- Have you seen it?

Effect on Parishes

- Anticipated effect on parishes **as at beginning of September**
- Government has noted concerns about funding
- Proposing that parish tax bases will not be reduced because of council tax support discounts
- Consultation paper – responses by 9 October



Any questions?

T&M Parish Partnership
6th September 2012
Kent County Council Service Updates

1) KCC Member Grants Update

Tonbridge and Malling County Councillors are now welcoming applications for projects under the Small Community Capital Grant & Local Schemes Grants. Over £60,000 in total is available and a deadline has been set for Friday 26th October 2012 for applications

There will also be the 3rd You Decide Public Event with £10,000 available for organisations operating in the Malling Central Area to have their proposals voted on by local residents. This event will be held on the 6th of October at the Malling School.

Applications for all of the above can be obtained via the Community Engagement Officer James Harman (details below).

2) MZS Junctions 5 to 7 Managed Motorways Scheme

In the October 2010 Spending Review, the Chancellor announced that the M25 J5 to 6/7 managed motorway scheme will be prepared for start of construction before 2015, subject to the outcome of statutory processes.

Alongside the Budget announcement on the 21st March 2012, the Government confirmed that this scheme is planned to commence in financial year 2013/14. Since June 2008 we have been considering options to improve the traffic flow from Junctions 5 to 7. In January the Secretary of State decided that this section of motorway could be improved by the introduction of a system to replace the hard shoulder with a fourth running lane (otherwise known as Managed Motorways - All Lanes Running). Since then we have been working on design arrangements to prepare for works to introduce this after the Olympics. Our aim will be to provide the minimum amount of improvements necessary to deliver the safe operation of Managed Motorways.

Public Information Exhibitions were held throughout July and August by the Highways Agency

For more information- <http://www.highways.gov.uk/roads/projects/5735.aspx>

3) Kent Jobs for Young People

Kent County Council wants to double the number of apprentices in Kent building on our excellent work over the last few years. Employing an apprentice could cost as little as £60 per week with our grants or £100 without.

KCC have put aside £2 million from the Big Society Fund to help local employers to take on more young people as apprentices. Your business may be eligible to access grants of £2000 to take on an apprentice.

This grant will be available if your business meets our criteria and will in most cases combine with other national grants. This means in some cases you could receive as much as £4,275. To be able to receive the grant, businesses must be based in Kent have fewer than 250 employees (applies to units/departments in public sector and does not apply to social enterprises) have not taken on an apprentice for the last 2 years (This criteria does not apply if the candidate is 9+ months unemployed)

You can find out more by calling 0800 10 18 2 24 or by visiting www.kent.gov.uk/apprentice

4) KCC Fostering and Adoption Campaign

KCC launched their new Fostering and adoption websites last months as part of a new campaign to increase the sign up of foster carers in Kent. Tonbridge and Malling has been identified as one the areas where potential foster carers and adoptive parents are being sought.

KCC are looking to work with District and Parish Councils to help raise awareness of the campaign and to try and ensure local children and young people in care do not more too far away from their friends and schools.

People interested in fostering or adoption can telephone 0845 330 2968 or visit <http://kentfostering.co.uk/> or <http://kentadoption.co.uk/>

5) New post-16 travel card available now

Students and apprentices who are over 16 are now able to apply for a new way to help with transport.

KCC's new Post-16 Travel Card comes into effect from the 1st of September and will offer bus travel across Kent for the year- for £10 a week. It offers the same benefits as KCC's popular Freedom Pass (for 11 to 16 year-olds), which is valid for bus journeys across the county, at all times, including holidays and weekends.

The card has been set up following consultation with Kent Youth County Council and a trial with students in Kent.

The Card scheme is exclusive to KCC and has a typical value of £750. The council will subsidise each Card to a value of £230, as part of its commitment to help young people stay in education or training. Cards will be in use this September in schools and colleges and will cost £520, equivalent to just £10 a week, for each student. Colleges or schools can choose to subsidise the cost further for some students - depending on the individual's financial circumstances.

Anyone currently in receipt of discretionary post-16 home to school transport will continue to get it until they leave their current school, college or work-based learning provider. No existing recipient will be disadvantaged. KCC is aware that help with travel costs is a key issue for young people remaining in education after the age of 16.

www.kent.gov.uk/roads_and_transport/getting_around/travel_by_bus/kent_16_plus_travel_card.aspx

6) Fairer Deal for Council Tax Payers

KCC is working with Government for a new funding system which will offer a fairer deal for our council tax payers.

- South East residents face unfairly high levels of council tax as a direct result of low central funding for South East authorities. Inequitable grant allocations over many years have put increasing pressure on our council tax payers, with some of our residents having to pay 40% more than residents in London or metropolitan areas.
- Inadequate grants and lack of long term central funding commitments mean South East councils are unable to invest in key infrastructure that will help grow the economy. Figures show capital spending in London 3.3 times higher than in the South East. Our track record as the engine room of the wider UK economy is at risk if we do not invest in major projects that will help us drive the country out of recession.
- South East health spending per head in 2010-11 was the lowest in England, 30% below London and 12% below the national average. This differential puts the delivery of health services under extreme financial pressure and reduces speedy access to some services.

7) How we monitor our performance

There have been changes in national policy: comprehensive area assessment, the national indicator set, the government offices for the regions, the regional development agencies and the standards board have all been abolished. The passing of the Localism Act at the end of 2011 marked a further significant shift in power from Whitehall to local councillors and communities.

KCC continues to monitor the 'high risk' areas of work i.e. Safeguarding and Looked After Children via Ofsted and Care Quality Commission. KCC also has its own performance framework and produces a Quarterly Performance Report containing key areas of performance across the Authority, which is reported to Cabinet and is a public document. Performance Dashboards are now being reported to Cabinet Committees allowing them to scrutinise performance within each directorate. In addition to this Internal Audit also give an independent opinion on key areas of our business.

Quarterly Performance Reports can be accessed via -
www.kent.gov.uk/your_council/council_performance/how_our_services_perform.aspx

8) Public Health Changes on the way

The enactment of the Health and Social Care Bill gives KCC, as an upper tier Authority, a new duty "to take appropriate steps to improve the health of the people." Some 23 public health programmes/services will be transferring to KCC on the 1st April 2013. The aim of the reforms are for Local Authorities to make a bigger impact on the health of the population and we have that aspiration in common.

As well as the Act introducing a generic duty, it also requires KCC to undertake a number of specific steps including:

- Establishing a Health and Wellbeing Board
- The development of an enhanced Joint Strategic Needs Assessment (JSNA) under the auspices of the Health and Wellbeing Board
- Commissioning Kent HealthWatch
- Assuming statutory responsibility for some of the key elements of the new national Public Health System
- Appointing (by statute) a Director of Public Health

The Act introduces a new national public health system consisting of four elements:

- National Commissioning Board
- Public Health England
- Clinical Commissioning Groups
- Upper Tier Local Authorities

In effect, this means that KCC becomes an integral part of this new national system providing locality-led leadership and oversight of public health (PH) in the County together with responsibilities for delivering some key public health services from the 1 April 2013. To support these new responsibilities the Authority will receive a ring-fenced budget and the transfer of most of the existing NHS staff currently working in public health in Kent (a similar process is underway with respect to Medway Council).

9) Library services for the future - Join the Conversation

Kent County Council is facing the challenge of delivering a comprehensive and efficient library service with reduced resources. KCC are moving into a more pro-active phase of the Future Libraries Services programme with the "Join the Conversation" campaign. There is a range of opportunities to show a new short film about the current service and opportunities for local people to join in the discussion.

We want to hear from people who have suggestions for how we can save money and still deliver the service by improving or changing how we do things.

There are three models that we have heard about so far:

- o Relocate to cheaper premises nearby
- o Reduce costs by bringing in others (eg Parish councils) to share space and costs
- o Discuss with local communities how they can take on and run smaller libraries

We would like to hear if anyone locally has any ideas about their library

In Tonbridge and Malling we have a Joint Advisory Panel and a smaller focus group has been set up to try and drive this agenda and will be meeting a number of times through late Summer/Autumn to try and reshape the service in the district and encourage new ideas and innovation.

www.kent.gov.uk/leisure_and_culture/libraries/future_library_services.aspx

10) Blue Badge Changes

More than 40 years after they were first introduced in 1970, Blue Badges are more valuable than ever for thousands of people who have mobility problems. However, while they have become increasingly valuable in allowing disabled people to park their cars in areas that would otherwise be off-limits, the badges have also become the focus of fraud.

Now, in an attempt to bring in better controls and stop the badges being abused, the Department for Transport has told councils to make changes to the way they are issued.

As a result, the badges will only be issued following a local authority assessment and the charge for issuing rose earlier this year from £2 to £10. In contrast with the present system, which charges people to make an application, the £10 charge will only apply to those whose applications are successful.

Kent County Council is committed to supporting disabled people by having an effective permit system, and that £10 over three years remains good value for the flexibility that the Blue Badge offers.

www.kent.gov.uk/adult_social_services/your_social_services/getting_out_and_active/disabled_parking_scheme.aspx

For more information on any of these subjects please contact:

James Harman

KCC Community Engagement Officer (Tonbridge and Malling)

james.harman@kent.gov.uk

01622 694195



KCC Services Update September 2012

James Harman
Community Engagement Officer
Tonbridge and Malling
James.harman@kent.gov.uk

KCC Member Grants 2012/3

- **LSG and SCCG Grant Deadlines**

Tonbridge and Malling County Councillors are now welcoming applications for projects under the Small Community Capital Grant & Local Schemes Grants. Over £60,000 in total is available and a deadline has been set for **Friday 26th October 2012** for applications

- **You Decide Public Event**

£10,000 available for organisations operating in the Malling Central Area to have their proposals voted on by local residents. This event will be held on the 6th of October at the Malling School. Deadline for applications is 28th Sept

Changes to Household Waste Centres

Kent County Council is introducing a few minor operational changes to the Household Waste Recycling Centres from 1 October 2012, following a service review and a county-wide public consultation. These changes will not affect the great majority of householders.

Key changes are;

- **Size of Trailers**
- **Soil, rubble and hardcore volumes**
- **Tyres and asbestos limits and charges**
- **Commercial vehicles
(Business/Trade/Commercial)**
- **Domestic vehicles over 2 metres high**

GCSE Results 2012

Thousands of young people in Kent are celebrating getting their GCSE results. *There has been year-on-year improvement in Kent since 1995.*

- *Based on provisional figures, it has been another great year for Kent's students*
- *60% of the county's students achieved the key benchmark of five A* to C grades, including English and maths – this is up 0.6 percentage points on 2011*
- *There was a pleasing jump in maths at GCSE A* to C – up by 2.3 percentage points on the previous year, bucking the national trend which saw a decline*
- *A number of schools have achieved double-digit improvements in their five A* to C grades, including English and maths – again bucking the national trend*

School by school details will be available later this autumn

KCC News Headlines

- **KCC Budget Consultation-** Launched 6th September
- **Kent Jobs for Young People** – Looking for Young people and businesses to sign up
- **Kent Lane Rental Scheme** – Consultation ends on 17th of September

More information can be found at www.kent.gov.uk

Questions?

James.harman@kent.gov.uk
